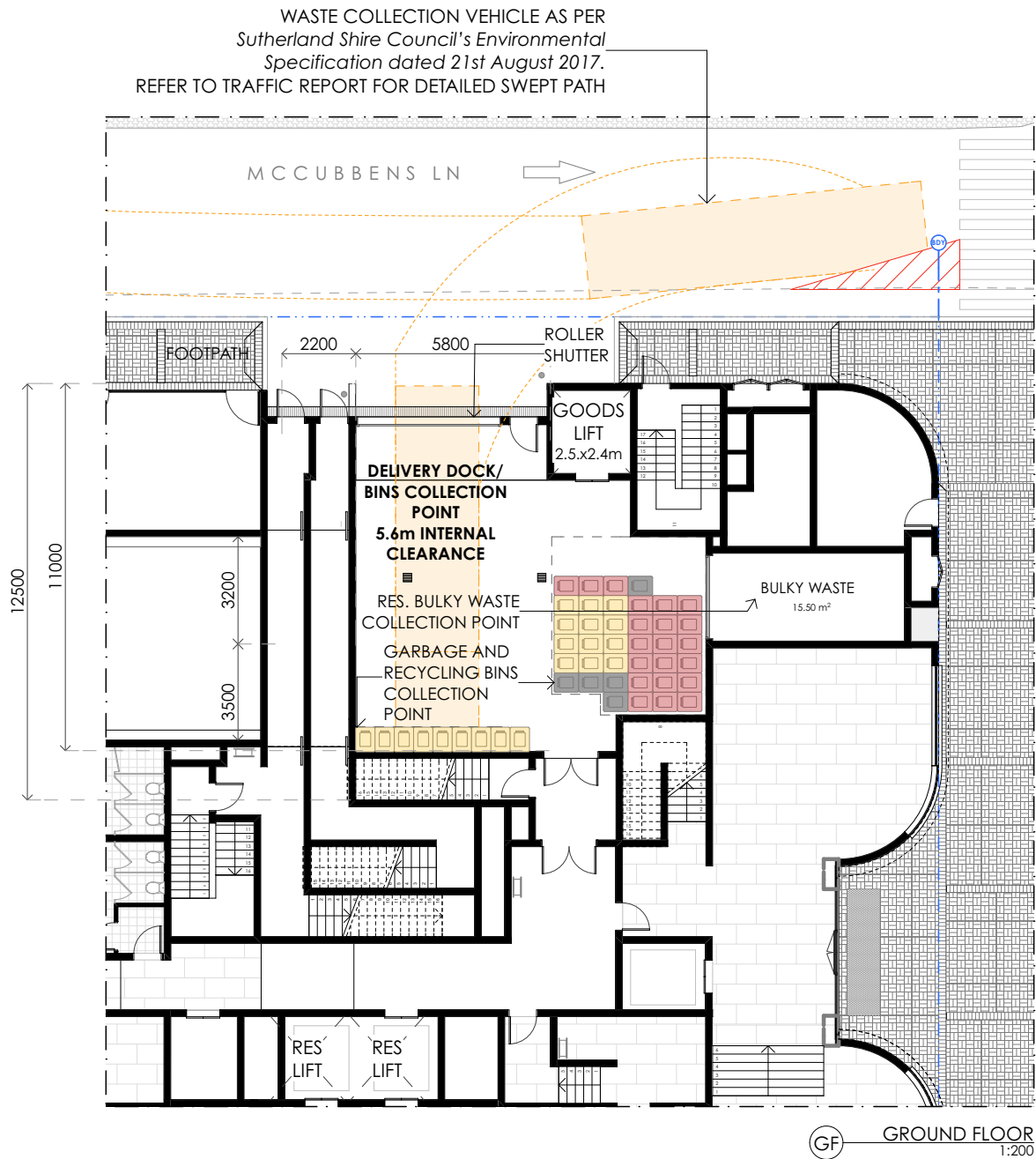


Residents will find the **garbage room** located on BASEMENT 03 and accessible through two residential lifts that connect every level from BASEMENT 04 to LEVEL 08.
The room is 50m² (lift excluded) and has been dimensioned to be accessible and to accomodate 21 garbage 240l bins (RED), 21 recycling 240l bins (YELLOW), and 5 240l additional bins (GREY).

A dedicated area of 23.95m² (TOTAL) for **bulky household waste** awaiting collection has been provided, 9.45m² on B3, 15.5m² on GF.



On the day of collection, the Strata Manager will provide to transfer the garbage and recycling bins from BASEMENT 03 to the the indicated **bins collection point** through the bins lift.
The Strata Manager will also transfer the stored bulky waste from BASEMENT 03 to the **bulky waste collection point** indicated on this plan for council's pre-booked clean-up service.

A collection vehicle will collect the bins once a week, refer to the traffic report for more details on swept path and traffic circulation on McCubbens lane.

DRAWING REVISIONS		
A	13/11/18	DA REVISION A ISSUE TO COUNCIL
B	26/08/19	DRAWINGS UPDATED & RE-ISSUE TO COUNCIL GARBAGE BIN NUMBERS ADJUSTED TO COMPLY WITH COUNCIL LETTER ON 30/07/19
C	21/10/19	DRAWINGS UPDATED & RE-ISSUE TO COUNCIL BULKY WASTE AREA ADDED

Sutherland Shire Council
DCP CHAPTER 24
B3 Commercial Core - Sutherland

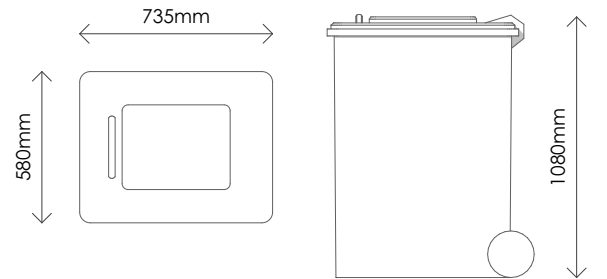
17.2 Controls

2. The residential waste generation rate per dwelling is 120 litres per week of general waste plus 120 litres per week of recycling.
The general waste and recycling needs per dwelling in multi- unit developments with 20 or more apartments can be reduced in accordance with the waste generation rates in Table 1 below.

DWELLING NUMBER	GARBAGE	RECYCLING
42	120 L	120 L

Table 1: Waste Generation Rates

PROPOSED BINS DIMENSIONS:
240L garbage and recycling



PRE-DA discussion notes indicate that Council supports onsite collection for this development.

RESIDENTIAL WASTE GENERATION CALCULATION		
PROPOSED DWELLINGS	GARBAGE	RECYCLING
42 DWELLINGS	120 L	120 L
5040 L / 240 L = 21 GARBAGE BINS REQUIRED		
5040 L / 240 L = 21 RECYCLING BINS REQUIRED		
5040 L / 240 L = 5 ADDITIONAL BINS REQUIRED		

"I-7 BOYLE ST_MASTER" BIM Server: BIM-Server.local - BIMcloud Basic for ARCHICAD 20/171115, I-7 BOYLE ST SUTHERLAND/I-7 BOYLE ST_MASTER

vic lake architect

0400 284 587

viclakearchitects.com.au

nominated architect: Vic Lake NSW reg. 4475

ID	DATE	DESCRIPTION
C	21/10/19	DWG RE-ISSUED TO COUNCIL
B	26/8/19	DWG RE-ISSUED TO COUNCIL
A	13/11/18	DA REV-A ISSUED TO COUNCIL

PROJECT:
MIXED USE DEVELOPMENT
PROJECT ADDRESS:
1-7 BOYLE STREET SUTHERLAND 2232
DRAWING NAME:

WASTE MANAGEMENT PLAN - RESIDENTIAL

PROJECT NUMBER:
171115
CLIENT:
TAYLORMADE PTY LTD

SCALE:
1:200 @ A3
DATE:
21/10/19
DRAWING NUMBER / REV:
DA06.19 C

In accepting and using this document the recipient agrees that Victor Robert Bryce Lake and Associates Pty Ltd, (VRBL) ACN retains all common law, statutory law including copyright and intellectual property rights. The recipient agrees not to use this document for any purpose than its intended use and to waive all claims against VRBL resulting from unauthorised changes or to reuse the document on other projects without written consent from VRBL. This document cannot be transferred or on-sold without written consent from VRBL. VRBL does not provide warranties of fitness for use unless the construction documentation and specifications have been prepared by VRBL. Figured dimensions to take precedence over scaling of documents.